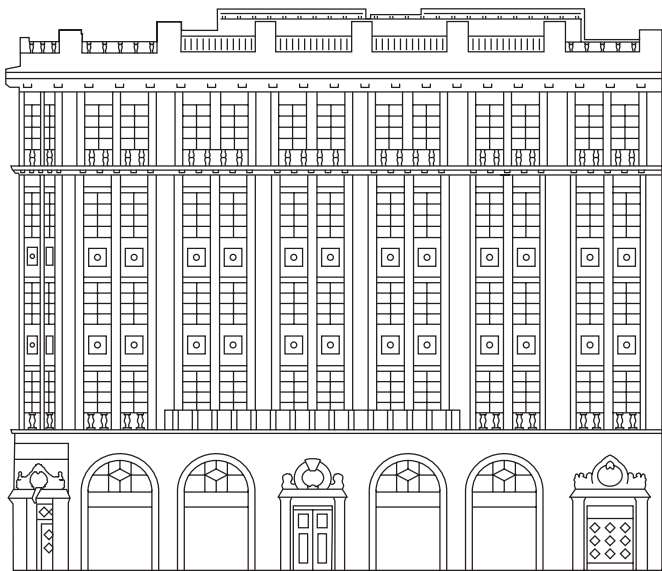


**THE DOLLI®**

AT ACROPOLIS

*Pâtisserie*



# The Dolli Afternoon Tea / Coffee

15:30 - 18:30

**Chocolate, Fruit & Freshly Baked Biscotti**

**Cotton Candy**

**Handmade Little Pastries**

**Traditional Scones**

with clotted cream & Dolli's thyme honey

**Cold Sandwiches Classic Selection**

salmon, egg, chicken, cucumber

**Tea, Herbal Infusion or Coffee of your choice**

€55

**with a Glass of Champagne (125ml)**

€68



# THE DOLLI PÂTISSERIE

11:00 - 19:00

<b>The Pâtisserie</b>	€18
cakes, pastries & selection of desserts	
<b>Galaktompoureko</b>	€16
caramelized fyllo crust, semolina cream, honey syrup, kaimak ice cream	
<b>Pavlova Ice cream</b>	€16
Swiss merengue, white chocolate Namelaka, fresh fruits	
<b>Tiramisu</b>	€16
Namelaka Mascarpone flavored with maple syrup, roasted espresso coffee, cacao	
<b>Athenian Pastry Showcase</b>	€16
selected from classic old pâtisseries	

## CANAPÉS

<b>Tramezzini (4pcs)</b>	€20
with cream cheese, vegetables, fig & pistachio	
<b>Sea bass (6pcs)</b>	€24
carpaccio, green apple, chives, lime	
<b>Salmon Balik</b>	€24
with homemade blinis, fresh cream & red caviar	
<b>THE DOLLI® Tower</b>	€34
A splendid selection of luxe canapés & fresh pastries served in a 3-tier silver stand	

## COFFEE

### **ESPRESSO Method** — Single Estate Guatemala Entre Volcanes

Cup profile: caramel, milk chocolate, mild acidity, orange peel in the aftertaste

Espresso (ristretto, normale, lungo)	€ 5
Espresso macchiato	€ 5
Espresso double	€ 7
Espresso affogato	€ 10
Cappuccino	€ 7
Cappuccino double	€ 8
Café latte	€ 7
Flat white	€ 8
Freddo espresso	€ 7
Freddo cappuccino	€ 8
Freddo café latte	€ 8

### **FILTER COFFEE** Specialty Coffees

#### **Hand Brew, Premium Estate, Costa Rica, V60 Method** € 8

Cup profile: sweet dark chocolate, fruity acidity, round body, clean aftertaste

#### **Hand Brew, Elida Geisha, Panama, V60 Method** € 15

Cup profile: jasmine, tropical fruits, papaya, sweet candy, delicate acidity, juicy, lingering

#### **Cold Brew, Hariti, Single Estate Sidamo, Ethiopia** € 9

Cup profile: bergamot, spicy, chocolate, sweet acidity, fine silky body, very smooth

## CHOCOLATE

Chocolate	€ 7
Chocolate bitter	€ 8

## SELECTION OF TEAS & HERBAL INFUSIONS € 7